

SNF s.a.s. has set up two safety systems intimately connected to each other.

SNF takes all necessary measures and uses its best endeavors to create a safe working environment. SNF is committed to risk detection and implementing preventive actions. Follow-up and strict controls are done every day at every level. Indicators enable a close examination of results for a continuous improvement.

Accident frequency rates (LTIFR) as well as the severity rates are carefully monitored. To accurately follow the planned actions to improve our results, internal audits are regularly planned and conducted in all the departments. SNF's *Document Unique* lists the risks connected to every job as well as the preventive actions taken and the corresponding protection equipments. All the results are presented every month during the supervision meetings, councils of company and CHSW, the Committee for Hygiene and Safety and Working conditions.

A Safety Management System (SGS) in accordance with appendix III of SEVESO II is in place. It is designed to prevent any accident by using all the tools available such as: risk analysis of processes and equipments before installation or modification, audits, inspections, trainings (POI, PPI) and AQSE action implementation.

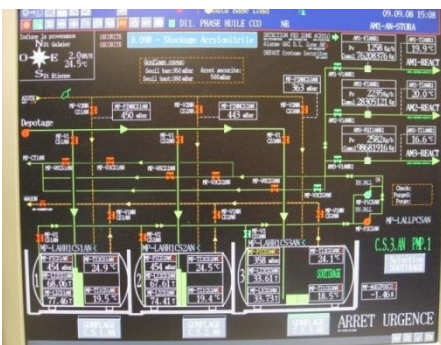
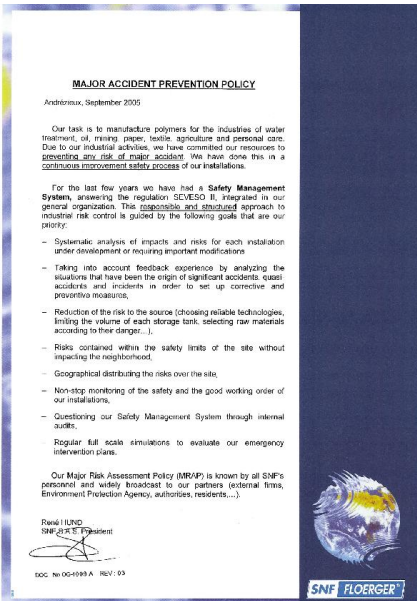
The Safety Management System's performance is enforced by numerous audits, internal and external, planned and surprise, specific and general. The DREAL* also has parallel inspections at least every 6 months to check the installations. In addition to these audits and inspections, AQSE actions (Quality Safety Environment Action) are implemented for improvement. All the results are examined during the Safety Management Reviews which fix new objectives twice a year.

Internal communication with our partners (neighbours, DREAL, companies) is one of SNF's priorities to be sure that the prevention politics is known to all.

Local Committees of Information and Dialogue (CLIC) are regularly organized to meet with the neighbours and to present SNF's pro-active measures in terms of health and safety.

SNF does a POI training every year (emergency Plan for an accident within the limits of property) and every 3 years, a PPI exercise (Emergency Plan for an accident exceeding the limits of property) in association with the prefecture, the DREAL*, and the local fire department.

* DREAL is a French governmental industrial regulation organization



Health and Safety

